

Color

Shellac™

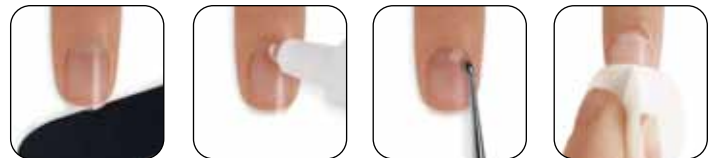
Application & Removal

Say Hello to the FIRST hybrid nail color. New, patent-pending UV³ Technology combines the ease of polish with the performance of gels. A true innovation in chip-free, extended-wear nail color.

Fingernails

STEP 1:

Meticulous Natural Nail Prep



“P.E.P.”:

P - Perform A Manicure

- Shape and smooth the extension edge of the nail with a **Kanga™ File**.
- Remove true cuticle from the nail plate with **CuticleAway** and a cuticle pusher.
- Have the client wash their hands with liquid soap and warm water. Towel dry.
- Double check for stubborn cuticle and debris by pulling back the lateral folds (sidewalls) of the nails with your fingers and, using a curette, gently remove any remaining cuticle.

E - Eliminate surface contaminants by scrubbing the nail with **ScrubFresh™** and a lint-free pad.

P - Purify nail plate layers with ScrubFresh, which will remove oil and debris from the nail plate.

Note: It is not necessary to remove shine from the natural nail plate with a buffer.

STEP 2:

Shellac UV Base Coat Application

- Shake the bottle to blend.
- Apply one thin layer to each **nail surface** and **extension edge** of all five nails on one hand.
 - Remove the applicator brush from the bottle and wipe it against the bottle's neck to drain excess product from the brush.
 - Stay parallel to the natural nail and place the brush in the center of the nail slightly away from the cuticle line.



Step 2: (continued)

- c. Gently push the brush toward the cuticle line and then glide down one side to the extension edge of the nail.
 - d. Lift the brush and repeat on the opposite side of the nail, followed by the same steps to coat the center.
 - e. Be sure to encase the extension edge to ensure long wear.
3. Cure all five fingers together for ten seconds in the **CND UV Lamp***.
 4. Repeat the process on the other hand.

STEP 3:

Shellac UV Color Coat Application



Solid Color

1. Shake the bottle vigorously to blend.
2. Apply one very thin coat to each **nail surface** and **extension edge** of all five nails on one hand. (This layer will be slightly semi-sheer if applied correctly).
 - a. Remove the applicator brush from the bottle and wipe it against the bottle's neck to drain excess product from the brush.
 - b. Stay parallel to the natural nail and place the brush in the center of the nail slightly away from the cuticle line.
 - c. Gently push the brush toward the cuticle line and glide down one side to the extension edge of the nail.
 - d. Lift the brush and repeat on the other side of the nail, followed by the same steps to coat the center.
 - e. Be sure to encase the extension edge to ensure long wear.
3. Cure all five nails for two minutes in the **CND UV Lamp***.
4. Repeat the process on the other hand.
5. Apply a second thin Color Coat to the surface and extension edge of all five nails using the same process. This coat provides full coverage if using an opaque color.
6. Cure all five nails for two minutes in the **CND UV Lamp***.



French Manicure

1. Shake the bottle vigorously to blend.
2. Start with a sheer pink **Shellac UV Color Coat** (not white tip): Apply one thin layer of your chosen pink on the **nail surface** and **extension edge** of all five nails on the first hand.
 - a. Remove the applicator brush from the bottle and wipe it against the bottle's neck to drain excess product from the brush.

**If using the Brisa lamp, apply and cure four fingers on each hand and then the thumbs.*

Step 3: (continued)

- b. Stay parallel to the natural nail and place the brush in the center of the nail slightly away from the cuticle line.
 - c. Gently push the brush toward the cuticle line and glide down one side to the extension edge of the nail.
 - d. Lift the brush and repeat on the other side of the nail, followed by the same steps to coat the center.
 - e. Be sure to encase the extension edge to ensure long wear.
3. Cure all five nails for two minutes in the **CND UV Lamp**.*
 4. Apply a thin coat of white **Shellac UV Color Coat** to the tips of the nails, in an arched smile line to flatter the nail shape. Detail with the Brisa™ ProSeries Gel Brush dipped in 99% IPA (Isopropyl Alcohol) to perfect the smile line.
Note: Applying the white tip on top of a pink base will assure that the detailing brush doesn't remove the critical Base Coat layer during this refinement step.
 5. Place all five fingers in the **CND UV Lamp** and cure for two minutes.*
 6. Repeat the process on the other hand.

STEP 4:

Shellac UV Top Coat Application



1. Shake the bottle to blend.
2. Apply one thin layer to each **nail surface** and **extension edge** of all five nails on one hand.
 - a. Remove the applicator brush from the bottle and wipe it against the bottle's neck to drain excess product from the brush.
 - b. Stay parallel to the natural nail and place the brush in the center of the nail slightly away from the cuticle line.
 - c. Gently push the brush toward the cuticle line and glide down one side to the extension edge of the nail.
 - d. Lift the brush and repeat on the other side of the nail, followed by the same steps to coat the center.
 - e. Be sure to encase the extension edge to ensure long wear.
3. Cure all five nails for two minutes in the **CND UV Lamp**.*
4. Repeat the process on the other hand.
5. Remove the top film (sticky inhibition layer) with a plastic-backed, lint-free pad soaked with 99% IPA (Isopropyl Alcohol).
6. Condition the nails and surrounding soft tissue with **SolarOil™** and send a bottle home with the client for daily conditioning.
7. Pre-book your client for a re-Shellac in two weeks.

**If using the Brisa lamp, apply and cure four fingers on each hand and then the thumbs.*

Shellac Removal

1. Have the client wash their hands with liquid soap and warm water. Towel dry.
2. Massage **CoolBlue™** into your client's hands to sanitize.
3. Wrap each finger with a Shellac Remover Wrap
 - a. Saturate the cotton pad on the **Shellac Remover Wrap** with 99% pure acetone. Place wrap under the finger with the edge of the cotton pad underneath the free edge of the nail
 - b. Fold the cotton pad over the top of the nail.
 - c. Wrap the long tab around the finger, ensuring a snug fit.
 - d. Secure wrap with the adhesive tab.
4. Leave the **Shellac Remover Wrap** on the finger for ten minutes.
5. Securely grip each finger and apply slight pressure to the fingernail.
6. Using a twisting motion, pull the **Shellac Remover Wrap** and product from the fingernail.
If a significant amount of Shellac remains on the nail (due to extended wear or other unique situations), rewrap the nail and allow acetone to penetrate a few more minutes.
7. If necessary, gently slide off any remaining product with an orangewood stick. Be careful not to scrape away the surface layers of the natural nail plate.
8. Rub the nail with a plastic-backed, lint-free pad soaked with acetone to remove any product residue.



Toenails

STEP 1:

Meticulous Natural Nail Prep



“P.E.P. :”

P - Perform A Pedicure

- a. Wash client’s feet with liquid soap and warm water, or soak in a pedicure tub with your choice of SpaPedicure™ soak products. Towel dry.
- b. Shape and smooth the nail’s extension edge with a **Kanga™ File**.
- c. Remove any cuticle from the nail plate with **CuticleAway** and a cuticle pusher.
- d. Cleanse feet with soap and water to neutralize and remove CuticleAway.
- e. Double check for stubborn cuticle and debris by pulling back the lateral folds (sidewalls) of the nails with your fingers and, using a curette, gently remove any remaining cuticle.

E - Eliminate surface contaminants by scrubbing the nail with **ScrubFresh™** and a lint-free pad.

P - Purify nail plate layers with ScrubFresh, which will remove oil and debris from the nail plate.

Note: It is not necessary to remove shine from the natural nail plate with a buffer.

STEP 2:

Shellac UV Base Coat Application



1. Shake the bottle to blend.
2. Apply one thin layer to each **nail surface** and **extension edge** of all five nails on one foot.
 - a. Remove the applicator brush from the bottle and wipe it against the bottle’s neck to drain excess product from the brush.
 - b. Stay parallel to the natural nail and place the brush in the center of the nail slightly away from the cuticle line.
 - c. Gently push the brush toward the cuticle line and glide down one side to the extension edge of the nail.
 - d. Lift the brush and repeat on the other side of the nail, followed by the same steps to coat the center.
 - e. Be sure to encase the extension edge to ensure long wear.
3. Cure all five toes for ten seconds in the **CND UV Lamp** or **Brisa Lamp**.
4. Repeat the process on the other foot.

STEP 3:

Shellac UV Color Coat Application



1. Shake the bottle vigorously to blend.
2. Apply one very thin coat to each **nail surface** and **extension edge** of all five nails on one foot. (This layer will be slightly semi-sheer if applied correctly).
 - a. Remove the applicator brush from the bottle and wipe it against the bottle's neck to drain excess product from the brush.
 - b. Stay parallel to the natural nail and place the brush in the center of the nail slightly away from the cuticle line.
 - c. Gently push the brush toward the cuticle line and glide down one side to the extension edge of the nail.
 - d. Lift the brush and repeat on the other side of the nail, followed by the same steps to coat the center.
 - e. Be sure to encase the extension edge to ensure long wear.
3. Cure all five toes for two minutes in the **CND UV Lamp** or **Brisa Lamp**.
4. Repeat the process on the other foot.
5. Apply a second thin Color Coat to the surface and extension edge of all five nails using the same process. This coat provides full coverage if using an opaque color.
6. Cure all five toes for two minutes in the **CND UV Lamp** or **Brisa Lamp**.

STEP 4:

Shellac UV Top Coat Application



1. Shake the bottle to blend.
2. Apply one thin layer to each **nail surface** and **extension edge** on all five nails on one foot.
 - a. Remove the applicator brush from the bottle and wipe it against the bottle's neck to drain excess product from the brush.
 - b. Stay parallel to the natural nail and place the brush in the center of the nail slightly away from the cuticle line.
 - c. Gently push the brush toward the cuticle line and glide down one side to the extension edge of the nail.
 - d. Lift the brush and repeat on the other side of the nail, followed by the same steps to coat the center.
 - e. Be sure to encase the extension edge to ensure long wear.
3. Cure all five toes for two minutes in the **CND UV Lamp** or **Brisa Lamp**.
4. Repeat the process on the other foot.

Step 4: (continued)

5. Remove the top film (sticky inhibition layer) with a plastic-backed, lint-free pad soaked with 99% IPA (Isopropyl Alcohol).
6. Condition the nails and surrounding soft tissue with **SolarOil™** and send a bottle home with the client for daily conditioning.
7. Pre-book your client for a re-Shellac in two weeks.

Shellac Removal



1. Wash client's feet with liquid soap and warm water or soak in a pedicure tub with your choice of SpaPedicure™ soak products. Towel dry.
2. Massage **CoolBlue** into the client's feet to sanitize.
3. Wrap the large toenail with a **Shellac Remover Wrap** and wrap the smaller toes with cotton and foil.

To use the wrap:

- a. Saturate the cotton pad on the **Shellac Remover Wrap** with 99% pure acetone. Place wrap under the toe with the edge of the cotton pad under the free edge of the nail.
- b. Fold cotton pad over the top of the nail and wrap around toe, ensuring a tight, snug fit.
- c. Wrap the long tab around the toe, ensuring a snug fit.
- d. Secure wrap with adhesive tab.

To use cotton and foil:

- a. Saturate cotton balls with 99% pure acetone.
 - b. Place saturated cotton on each small toenail.
 - c. Cut a piece of foil large enough to wrap all four smaller toes.
 - d. Place foil under toes and wrap toes to secure cotton balls in place on top of nails.
4. Leave the **Shellac Remover Wrap** and cotton and foil on the toe for ten minutes.
 5. Securely grip each toe and apply slight pressure to the toenail.
 6. Using a twisting motion, pull the **Shellac Remover Wrap** or cotton and foil from the toenail. *If a significant amount of Shellac remains on the nail (due to extended wear or other unique situations), rewrap the nail and allow acetone to penetrate a few more minutes.*
 7. If necessary, gently slide off any remaining product with an orangewood stick. Be careful not to scrape away the surface layers of the natural nail plate.
 8. Rub the nail with a plastic-backed, lint-free pad soaked with acetone to remove any product residue.

Liquid & Powder or Gel Enhancements

STEP 1:

Meticulous Natural Nail Prep



Shellac can be used over Liquid & Powder or Gel Enhancements.

1. Complete fine finishing of the enhancements stopping short of **SolarOil™** application.
 - For **Liquid & Powder** enhancements, refrain from bringing them to a high shine with a high shine buffer. Leave nails smoothed and refined with a 1200 grit buffer, like the **Koala Buffer**.
 - For **Brisa Gel** enhancements, seal with **Brisa Gloss** and leave the sticky inhibition layer on the nail.

Do not apply Shellac UV Base Coat, go straight to the Color Coat.

STEP 2:

Shellac UV Color Coat Application



1. Shake the bottle vigorously to blend.
2. Apply one very thin coat to each **nail surface** and **extension edge** of all five nails on one hand. (This layer will be slightly semi-sheer if applied correctly).
 - a. Remove the applicator brush from the bottle and wipe it against the bottle's neck to drain excess product from the brush.
 - b. Stay parallel to the natural nail and place the brush in the center of the nail slightly away from the cuticle line.
 - c. Gently push the brush toward the cuticle line and glide down one side to the extension edge of the nail.
 - d. Lift the brush and repeat on the other side of the nail, followed by the same steps to coat the center.
 - e. Be sure to encase the extension edge to ensure long wear.
3. Cure all five nails for two minutes in the **CND UV Lamp**.*
4. Repeat the process on the other hand.
5. Apply a second thin color coat to the surface and **extension edge** of all five nails using the same process. This coat provides full coverage if using an opaque blend.
6. Cure all five nails for two minutes in the **CND UV Lamp**.*
7. Repeat the process on the other hand.

**If using the Brisalamp, apply and cure four fingers on each hand and then the thumbs.*

STEP 3:

Shellac UV Top Coat Application



1. Shake the bottle to blend the ingredients.
2. Apply one thin layer of Shellac UV Top Coat to each **nail surface** and **extension edge** on all five nails on one hand.
 - a. Remove the applicator brush from the bottle and wipe it against the bottle's neck to drain excess product from the brush.
 - b. Stay parallel to the natural nail and place the brush in the center of the nail slightly away from the eponychium line.
 - c. Gently push the brush toward the cuticle line and glide down one side to the extension edge of the nail.
 - d. Lift the brush and repeat on the other side of the nail, followed by the same steps to coat the center.
 - e. Be sure to encase the extension edge to ensure long wear.
3. Cure all five nails for two minutes in the **CND UV Lamp**.*
4. Repeat on the other hand.
5. Remove the top film (sticky inhibition layer) with a plastic-backed, lint-free pad soaked with 99% IPA (Isopropyl Alcohol).
6. Condition the nails and surrounding soft tissue with **SolarOil™** and send a bottle home with your client for daily conditioning.
7. Pre-book your client for a re-Shellac in two weeks.

Removal from Enhancements

To remove Shellac from Liquid & Powder or Gel enhancements, buff color off with a 180-grit file such as a **Blizzard** or **Hot Shot File**. As with all enhancement rebalances, be careful to avoid filing the finger and natural nail.

PRODUCTS REQUIRED

CuticleAway1 pearl-size drop per nail
Kanga™ File1 file
ScrubFresh™..... as needed
Shellac UV Base Coat 1 thin coat
Shellac UV Color Coat..... 2 thin coats
Shellac UV Top Coat 1 thin coat
SolarOil™1 pearl-size drop per nail
CoolBlue™1 pump
Citrus or Almond
SpaManicure™..... before service (optional)

ACCESSORIES/EQUIPMENT REQUIRED

CND UV Lamp
Shellac Remover Wraps..... 10 wraps
Towels
Plastic-backed, lint-free pads
Curette
Acetone
IPA (Isopropyl) Alcohol
Orangewood stick

**If using the Brisa lamp, apply and cure four fingers on each hand and then the thumbs.*