

ENHANCEMENTS

Brisa™ UV Gel Enhancements Sculpted on a Tip

90 MIN A service designed for problem nails with no free edge, requiring length and re-design.



STEP 1:

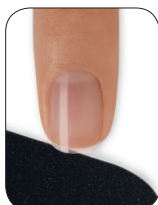
P.R.E.P.

1. P - Perform a manicure.

- Have the client wash their hands with soap and water and towel dry.
- Massage **CoolBlue™** into the client's hands to sanitize.
- Remove existing nail color using an acetone-based polish remover (or **ScrubFresh™**) and a plastic-backed lint-free pad.
- If necessary, trim the length from each nail, using nail clippers.



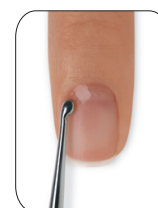
- Refine, smooth and shape the free edge of each nail with the 240-grit side of a **Kanga File** or **Koala Buffer**.



- Apply a small amount of **CuticleAway** evenly around the cuticle of each nail.



Gently slide a **cuticle pusher** along the nail plate toward the cuticle area and along the lateral fold to lift and loosen any non-living tissue from the nail plate. Use a **curette** to remove non-living tissue up to the eponychium and lateral edge.

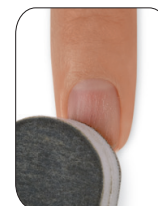


- Use a **manicure nipper** to carefully remove any loosened, non-living tissue, as well as any loose pieces of skin or hang nails. Use a gentle touch during cuticle removal to protect the seals.



- Scrub** nails thoroughly with soap and a damp brush, then rinse with warm water to remove the cuticle remover and soap; towel dry.

- ### 2. R - Remove shine from the nail surface with the 240-grit side of the **Koala Buffer™** in the direction of nail growth.



3. E - Eliminate surface contaminants and **P - Purify** nail plate layers

- a. Thoroughly cleanse and temporarily dehydrate the nail plate layers with **ScrubFresh™** using a lint-free, plastic-backed pad. Gently pull lateral folds back and scrub thoroughly to be sure all areas of the nail are completely clean.



When applying tips, it is **not necessary** to temporarily dehydrate the nail plate at this point of the service.

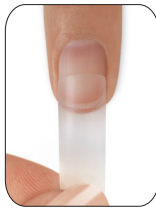


STEP 2:

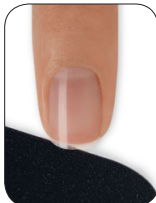
Apply Clear Tip

1. Fit The Tip

- a. **Match** the correct tip to the **C-curve** of the natural nail.
- b. **Fit - sidewall** - The tip should fit easily from side to side of the natural nail within the fingers' lateral sidewalls, and should encase the natural nail extension edge exactly.



2. Pre-Tailor The Natural Nail Extension Edge To Fit The Tip Stop Point Perfectly





3. Pre-Tailor The Tip For A Perfect Fit To The Nail

- a. The tip should fit perfectly from side to side, along the lower arch and at the back of the contact area. The contact area of the tip should cover no more than 50% of the natural nail before blended.
- b. **Refine** using a 240-grit file or cuticle scissor.



4. Apply The Tip

- a. **Place a bead of adhesive** in the contact area of the tip. Place a small line of adhesive on the natural nail plate near the extension edge. Hold the tip between the thumb and forefinger when applying adhesive. 
- b. **Spread the adhesive** gently with the tip to completely coat the entire extension edge. Use one or two quick wiping strokes to do this. Be particularly careful to coat the corners of the natural nail and the sidewall of the contact area with adhesive.
- c. **Secure** the tip by holding it at a 45° angle and gently butt the stop point against the natural nail extension edge. Slowly lower the contact area down to the natural nail, stopping when the desired side arch is achieved, while pressing all bubbles out. 
- d. **Press firmly** against the free edge for 5-10 seconds, securing the stop point to the nail.
- e. **Remove** any residual adhesive with a cotton swab.

5. Cut The Tip

- a. Use a "one-cut" implement or wide-blade curved cuticle scissors or clipper to cut the tip to desired length.

6. Blend The Tip

- a. **Thin** the tip evenly using a medium grit file and a rounded motion, paying close attention to the corners of the tip.
- b. **Refine** sidewalls using a 180-grit file. Refine sides with a fine grit file.

- c. **Refine** the entire tip with a fine grit file to taper evenly to the nail plate. Refine Zone 1 & Zone 2 using a 180-grit file and gently refine the remaining tip material from the nail to prevent ghost shadowing and pocket lifting.



Then refine with a 240-grit file to be sure the tip is thin, blended and translucent.

- d. **Wash** client's hands and clean the nail plate with **ScrubFresh™** after tip is thoroughly blended. Be sure to avoid the tip when cleansing the nail.

STEP 3:

Prime Nails - Apply Brisa™ Bond to Each Nail

1. **Apply** 1 thin coat of **Brisa Bond** to the natural nail plate of 2-3 nails at a time ensuring that the brush has enough liquid to thoroughly and evenly cover each nail. Repeat this step until all nails are thoroughly and evenly coated. Cure for **10 seconds** in the **CND UV Lamp**.*

Remember: When applying **Brisa Bond**, do not touch the skin or allow the product to flood the cuticle area.

STEP 4:

Create a Base Layer (optional)

This step will reinforce the enhancement and can prevent service breakdown. Implement when needed.

1. Apply a thin to medium layer of **Brisa Clear** or **Pure Pink - Sheer Sculpting Gel** in all three Zones.



**If using the Brisa lamp, apply and cure four fingers on each hand and then the thumbs.*

2. Apply to five fingers and **cure** each hand for **two minutes** in the **CND UV Lamp**.* Do not remove the sticky (uncured) layer after removing the nails from the lamp.



STEP 5:

Zone 1 - Smile Lines

1. Use the brush to define the shape of what will become the smile line using **Brisa Pure White** or **Soft White Sculpting Gel**. Make a bead and allow a "string" to form while removing the bead from the pot. Touch the tip of the "string" to the start of the desired sidewall smile line placement on the reverse side of the nail, and draw in the smile with a draping motion.
2. **Touch** the brush gently to the forward side of the sidewall to complete the line. This will "draw" in a guide for the smile line and help create consistency from nail to nail.
3. Once the smile line is established **fill in** the desired extension edge with the remaining gel on the brush.



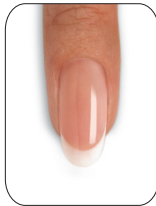
4. Apply to **two fingers at a time**, then **lock into place** for 10 seconds in the **CND UV Lamp**.* Then **apply to the thumb** and cure **all five fingers** for **two full minutes** in the **CND UV Lamp**.* Do not remove sticky (uncured) layer after removing the nails from the lamp.



STEP 6:

Zones 2 and 3 - Sculpting the Apex and Cuticle Area

1. **Build and shape** the enhancement by placing a scoop of gel onto the center of the nail in Zone 2.
2. **Guide** the product from side to side, rotating the brush at a 45 degree angle, and tapering toward the sidewalls - while keeping the bulk of the gel in the center of the nail.
3. **Gently ease** the gel back toward the cuticle area lightening the touch in the middle of the nail.
4. **Lightly feather** the gel up to the established smile line.



5. Apply to **two fingers at a time**, then **lock into place** for 10 seconds in the **CND UV Lamp**.* Then **apply to the thumb** and cure for **two full minutes** all five fingers in the **CND UV Lamp**.* Do not remove sticky (uncured) layer after removing the nails from the lamp.

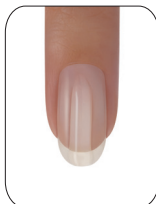


STEP 7:

Perfect the Shape of all 3 Zones (optional)

This step will reinforce the enhancement and can prevent service breakdown. Implement when needed.

1. **Apply** a thin layer of **Brisa Clear Sculpting Gel** over the entire nail to perfect the shape.
2. **Fill in** low spots by taking a tiny scoop onto your brush. Touch the product to one side of the low spot and lift up to create a thin strand of product.



**If using the Brisa lamp, apply and cure four fingers on each hand and then the thumbs.*

Pull this strand of gel across the nail and touch to the other side. Lift off, and allow the gel to self-level, filling in the low spot.

3. Apply to five fingers and **cure** each hand for **two minutes** in the **CND UV Lamp**.*



STEP 8:

Shape and Define

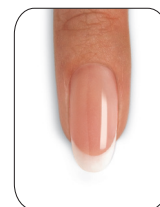
1. Remove the sticky, uncured layer with **ScrubFresh™** and a plastic-backed pad.
2. Finish the nail using a **Blizzard™ File** to define and shape.
3. Smooth the surface with a **Boomerang Padded File**, making sure to remove all shine.
4. **Remove** any dust with a disinfected brush. To remove any dust filings left on the freshly filed product, lightly go over nails with a plastic-backed pad and **ScrubFresh**.



STEP 9:

Bring to High Shine

1. Apply a thin layer of **Brisa Gloss** over the entire nail and encase the free edge.
2. Apply to five fingers and **cure** each hand for **two minutes** in the **CND UV Lamp**.*
3. **Remove** the sticky, uncured layer with **ScrubFresh** and a plastic-backed pad.



4. Massage **SolarOil™** into the nails and skin.

PRODUCTS REQUIRED

CoolBlue™
CuticleAway
ScrubFresh™
CND Files and Buffers
CND Clear Tips
ProSeries Gel Flat Oval #6 Brush
Brisa™ Bond
Brisa Sculpting Gels
Brisa Gloss
SolarOil™

ACCESSORIES/EQUIPMENT REQUIRED

CND UV Lamp
Terry hand towels
Plastic-backed, lint-free pads
Polish remover
Disinfectable dust brush*
Cuticle pusher
Cuticle nippers
Nail clippers
Curette
Tip Cutter*

*Optional