

ENHANCEMENTS

Brisa™ UV Gel Enhancements Rebalancing



1 HOUR

Rebalancing is a method of maintaining the balance and beauty of the enhancement while the natural nail grows. Proper rebalancing of the nail enhancement protects the health of the natural nail and maintains the longevity of the service.

STEP 1:

Cleanse

1. **Cleanse** hands.

- a. Have the client wash their hands with soap and water and towel dry.
- b. Massage **CoolBlue™** into the client's hands to sanitize.



STEP 2:

Assess for a Rebalance

1. **Remove** enamel and assess each nail for potential problems.

- a. There are **3 types** of rebalance:
 - **Problem-free rebalance**
When using a single-color gel, if the nail comes back problem free, re-establish the original length and reduce the product to a thin layer and apply product to re-engineer the enhancement's structural integrity.

- **Forever French rebalance**

Forever French enhancements that come back problem free need to be thinned out, by 50% in all 3 zones. Then apply product to re-establish the smile line and re-engineer the original structural design.

- **Diagnostic rebalance**

This process includes thinning and beveling each Zone where problems exist, then replacing the product to prevent future breakdown. The goal here is to fix the problem and then reassess a long-term solution.

STEP 3:

Prepping for Rebalance

File prep each Zone for correction and prevention of future problems. **Avoid nipping** or mechanical force – sliding the nipper under a lifted edge and pulling up leads to service breakdown. It can also pull up layers of the nail plate, which will weaken the foundation of the enhancement. Nipping can also lead to onycholysis, and perpetuate excessive filing to remove the ridge left behind.

1. Zone 1 – File Prep

- Re-establish the original length of the extension edge with a **120-grit file** (or higher).

- Use a **120-grit file** (or higher) to thin out the entire Zone 1. If the natural nail is separating from the product, file around the area of lift, until the loosened material flakes away from the natural nail without causing damage. Blend the lifted area until a new seal is found between the product and nail.



- Keep the **file parallel** to the nail and work in rounded motions to evenly thin out the coating.

- Bevel** to expose a small margin of keratin all the way around the extension edge and around lateral walls to reseal during product reapplication. This will help prevent the natural nail from pulling away from the overlay.



Bevel Down From Center To Tip Until Lift Is Removed

2. Zone 2 – File Prep

- Thin out** the entire Zone and taper the lateral walls.



- Prep all cracks** for repair by thinning the area around the crack. Thin all the way to the root of the crack (which is usually down to the natural nail plate).
- Thin** any area of “pocket lift” until the separated product flakes away and a new seal is found.
- Thin and taper** lateral walls until flush to the natural nail.
- Blend** Zone 2 into Zone 1.

3. Zone 3 – File Prep

- Thin** the entire Zone and taper to Zone 2.



- Thin** areas of lift until the separated product flakes away from the nail and a new seal is found.

- Buff** the remaining product with the 240-grit side of a **Koala Buffer™** until the product is flush to the natural nail.



- Review** entire file prep to be sure remaining product is thin and even, and that there is no lifted material left. Perform proper P.R.E.P. on the natural nail.

STEP 4:

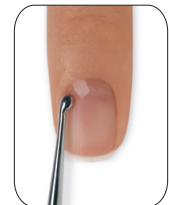
P.R.E.P.

1. P - Perform a manicure.

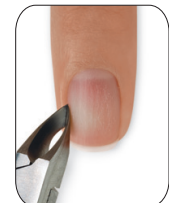
- Apply a small amount of **CuticleAway** evenly around the cuticle of each nail. Gently slide a **cuticle pusher**



- along the nail plate toward the cuticle area and along the lateral fold to lift and loosen any non-living tissue from the nail plate. Use a **curette** to remove non-living tissue up to the eponychium and lateral edge.



- Use a **manicure nipper** to carefully remove any loosened, non-living tissue, as well as any loose pieces of skin or hang nails. Use a gentle touch during cuticle removal to protect the seals.



- c. **Scrub** nails thoroughly with soap and a damp brush, then rinse with warm water to remove the cuticle remover and soap; towel dry.

- 2. **R - Remove** shine from the nail surface with the 240-grit side of the **Koala Buffer™** in the direction of nail growth.



- 3. **E - Eliminate** surface contaminants and **P - Purify** nail plate layers

- a. Thoroughly cleanse and temporarily dehydrate the nail plate layers with **ScrubFresh™** using a lint-free, plastic-backed pad. Gently pull lateral folds back and scrub thoroughly to be sure all areas of the nail are completely clean.



STEP 5:

Prime Nails - Apply Brisa™ Bond to Each Nail

- 1. **Apply** 1 thin coat of **Brisa Bond** to the natural nail plate of 2-3 nails at a time ensuring that the brush has enough liquid to thoroughly and evenly cover each nail. Repeat this step until all nails are thoroughly and evenly coated. Cure for **10 seconds** in the **CND UV Lamp.***

Remember: When applying **Brisa Bond**, do not touch the skin or allow the product to flood the cuticle area.

**If using the Brisa lamp, apply and cure four fingers on each hand and then the thumbs.*

STEP 6:

Create a Base Layer (optional)

This step will reinforce the enhancement and can prevent service breakdown. Implement when needed.

- 1. Apply a thin to medium layer of **Brisa Clear or Pure Pink - Sheer Sculpting Gel** in all three Zones.



- 2. Apply to five fingers and **cure** each hand for **two minutes** in the **CND UV Lamp.*** Do not remove the sticky (uncured) layer after removing the nails from the lamp.



STEP 7:

Zone 1 - Smile Lines

- 1. Use the brush to define the shape of what will become the smile line using **Brisa Pure White or Soft White Sculpting Gel**. Make a bead and allow a "string" to form while removing the bead from the pot. Touch the tip of the "string" to the start of the desired sidewall smile line placement on the reverse side of the nail, and draw in the smile with a draping motion.
- 2. **Touch** the brush gently to the forward side of the sidewall to complete the line. This will "draw" in a guide for the smile line and help create consistency from nail to nail.
- 3. Once the smile line is established **fill in** the desired extension edge with the remaining gel on the brush.



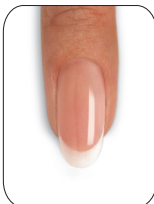
4. Apply to **two fingers at a time**, then **lock into place** for 10 seconds in the **CND UV Lamp**.^{*} Then **apply to the thumb** and cure all five fingers for **two full minutes** in the **CND UV Lamp**.^{*} Do not remove sticky (uncured) layer after removing the nails from the lamp.



STEP 8:

Zones 2 and 3 - Sculpting the Stress and Cuticle Area

1. **Build and shape** the enhancement by placing a scoop of gel onto the center of the nail in Zone 2.
2. **Guide** the product from side to side, rotating the brush at a 45° angle, and tapering toward the sidewalls – while keeping the bulk of the gel in the center of the nail.
3. **Gently ease** the gel back toward the cuticle area lightening the touch in the middle of the nail.
4. **Lightly feather** the gel up to the established smile line.



5. Apply to **two fingers at a time**, then **lock into place** for 10 seconds in the **CND UV Lamp**.^{*} Then **apply to the thumb** and cure all five fingers for **two full minutes** in the **CND UV Lamp**.^{*} Do not remove sticky (uncured) layer after removing the nails from the lamp.



STEP 9:

Perfect the Shape of all 3 Zones (optional)

This step will reinforce the enhancement and can prevent service breakdown. Implement when needed.

1. **Apply** a thin layer of **Brisa Clear Sculpting Gel** over the entire nail to perfect the shape.
2. **Fill in** low spots by taking a tiny scoop onto your brush. Touch the product to one side of the low spot and lift up to create a thin strand of product. Pull this strand of gel across the nail and touch to the other side. Lift off, and allow the gel to self-level, filling in the low spot.
3. Apply to five fingers and **cure** each hand for **two minutes** in the **CND UV Lamp**.^{*}



STEP 10:

Shape and Define

1. Remove the sticky, uncured layer with **ScrubFresh™** and a plastic-backed pad.
2. Finish the nail using a **Blizzard™ File** to define and shape.
3. Smooth the surface with a **Boomerang Padded File**, making sure to remove all shine.
4. **Remove** any dust with a disinfected brush. To remove any dust filings left on the freshly filed product, lightly go over nails with a plastic-backed pad and **ScrubFresh**.

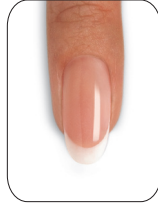


**If using the Brisa lamp, apply and cure four fingers on each hand and then the thumbs.*

STEP 11:

Bring to High Shine

1. Apply a thin layer of **Brisa™ Gloss** over the entire nail and encase the free edge.



2. **Cure** each hand for **two minutes** in the **CND UV Lamp**.*



3. **Remove** the sticky, uncured layer with **ScrubFresh™** and a plastic-backed pad.

4. Massage **SolarOil™** into the nails and skin.

PRODUCTS REQUIRED

CoolBlue™
CuticleAway
ScrubFresh
CND Files and Buffers
ProSeries Gel Flat Oval #6 Brush
Brisa Bond
Brisa Paint
Brisa Sculpting Gels
Brisa Gloss
SolarOil

ACCESSORIES/EQUIPMENT REQUIRED

CND UV Lamp
Terry hand towels
Plastic-backed, lint-free pads
Polish remover
Disinfectable Dust brush*
Cuticle pusher
Cuticle nippers
Nail clippers
Curette

*Optional