

ENHANCEMENTS

Brisa™ UV Gel Enhancements Natural Nail Overlay



1 HOUR A service option that is ideal for healthy, natural fingernails and toenails requiring protection and color enhancement.

STEP 1: P.R.E.P.

1. P - Perform a manicure.

- Have the client wash their hands with soap and water and towel dry.
- Massage **CoolBlue™** into the client's hands to sanitize.
- Remove existing nail color using an acetone-based polish remover (or **ScrubFresh™**) and a plastic-backed lint-free pad.
- If necessary, trim the length from each nail, using nail clippers.
- Refine, smooth and shape the free edge of each nail with the 240-grit side of a **Kanga™ File** or **Koala Buffer™**.
- Apply a small amount of **CuticleAway** evenly around the cuticle of each nail.

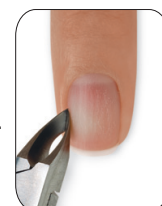


Gently slide a **cuticle pusher** along the nail plate toward the cuticle area and along the lateral fold to lift and loosen any non-living tissue from the nail plate.



Use a **curette** to remove non-living tissue up to the eponychium and lateral edge.

- Use a **manicure nipper** to carefully remove any loosened, non-living tissue, as well as any loose pieces of skin or hang nails. Use a gentle touch during cuticle removal to protect the seals.



- Scrub** nails thoroughly with soap and a damp brush, then rinse with warm water to remove the cuticle remover and soap; towel dry.

- #### 2. R - Remove shine from the nail surface with the 240-grit side of the **Koala Buffer** in the direction of nail growth.



3. E - Eliminate surface contaminants and **P - Purify** nail plate layers

- a. Thoroughly cleanse and temporarily dehydrate the nail plate layers with **ScrubFresh™** using a lint-free, plastic-backed pad. Gently pull lateral folds back and scrub thoroughly to be sure all areas of the nail are completely clean.



When applying tips, it is **not necessary** to temporarily dehydrate the nail plate at this point of the service.



STEP 2:

Prime Nails - Apply Brisa™ Bond to Each Nail

1. **Apply** 1 thin coat of **Brisa Bond** to the natural nail plate of 2-3 nails at a time ensuring that the brush has enough liquid to thoroughly and evenly cover each nail. Repeat this step until all nails are thoroughly and evenly coated. Cure for **10 seconds** in the **CND UV Lamp**.*

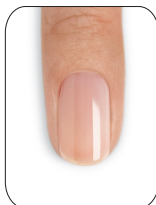
Remember: When applying **Brisa Bond**, do not touch the skin or allow the product to flood the cuticle area.

STEP 3:

Create a Base Layer (optional)

This step will reinforce the enhancement and can prevent service breakdown. Implement when needed.

1. Apply a thin to medium layer of **Brisa Clear** or **Pure Pink - Sheer Sculpting Gel** in all three Zones.



2. Apply to five fingers and **cure** each hand for **two minutes** in the **CND UV Lamp**.* Do not remove the sticky (uncured) layer after removing the nails from the lamp.



STEP 4:

Zones 1, 2, & 3 Application

1. **Place** a scoop of gel onto the center of the nail in Zone 2 and **guide** the product from side to side keeping the bulk of the gel in the vertical center of the nail.
2. **Gently ease** the gel back toward Zone 3, leaving a tiny free cuticle margin.
3. Apply to **two fingers at a time**, then **lock into place** for 10 seconds in the **CND UV Lamp**.* Then **apply to the thumb** and cure **all five fingers** for **two full minutes** in the **CND UV Lamp**.* Do not remove sticky (uncured) layer after removing the nails from the lamp.



STEP 5:

Perfect the Shape of all 3 Zones (optional)

This step will reinforce the enhancement and can prevent service breakdown. Implement when needed.

1. **Apply** a thin layer of **Brisa Clear Sculpting Gel** over the entire nail to perfect the shape.
2. **Fill in** low spots by taking a tiny scoop onto your brush. Touch the product to one side of the low spot and lift up to create a thin strand of product. Pull this strand of gel across the nail and touch to the other side. Lift off, and allow the gel to self-level, filling in the low spot.

**If using the Brisa lamp, apply and cure four fingers on each hand and then the thumbs.*

3. Apply to five fingers and **cure** each hand for **two minutes** in the **CND UV Lamp**.*



STEP 6:

Shape and Define

1. Remove the sticky, uncured layer with **ScrubFresh™** and a plastic-backed pad.

2. Finish the nail using a **Blizzard™ File** to define and shape.



3. Smooth the surface with a **Boomerang Padded File**, making sure to remove all shine.

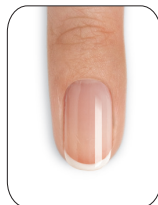
4. **Remove** any dust with a disinfected brush. To remove any dust filings left on the freshly filed product, lightly go over nails with a plastic-backed pad and **ScrubFresh**.

STEP 7:

Creating a Smile Line With Brisa™ Paint

1. Remove brush from bottle and wipe excess gel off from back of brush by dragging along the neck of the bottle.

2. **Paint** on smile line consistent with enamel French Manicure application techniques.



3. **Detail** the smile line with a UV Gel sculpting brush cleansed with **ScrubFresh**.

4. **Apply to five fingers** and cure each hand for **full two minutes** in the **CND UV Lamp**.* Do not remove the sticky (uncured) layer after removing the hands from the lamp.



**If using the Brisa lamp, apply and cure four fingers on each hand and then the thumbs.*

STEP 8:

Bring to High Shine

1. Apply a thin layer of **Brisa Gloss** over the entire nail and encase the free edge.



2. Apply to five fingers and **cure** each hand for **two minutes** in the **CND UV Lamp**.*



3. **Remove** the sticky, uncured layer with **ScrubFresh** and a plastic-backed pad.

4. Massage **SolarOil™** into the nails and skin.

PRODUCTS REQUIRED

CoolBlue™
 CuticleAway
 ScrubFresh
 CND Files and Buffers
 ProSeries Gel Flat Oval #6 Brush
 Brisa Bond
 Brisa Sculpting Gels
 Brisa Gloss
 SolarOil

ACCESSORIES/EQUIPMENT REQUIRED

CND UV Lamp
 Terry hand towels
 Plastic-backed, lint-free pads
 Polish remover
 Disinfectable Dust brush*
 Cuticle pusher
 Cuticle nippers
 Nail clippers
 Curette

*Optional