

ENHANCEMENTS

Brisa™ UV Gel Enhancements Sculpted on a Form



90 MIN A service option that is ideal for healthy, natural nails with a slight free edge requiring length and design enhancement.

STEP 1:

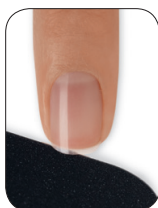
P.R.E.P.

1. P - Perform a manicure.

- Have the client wash their hands with soap and water and towel dry.
- Massage **CoolBlue™** into the client's hands to sanitize.
- Remove existing nail color using an acetone-based polish remover (or **ScrubFresh™**) and a plastic-backed lint-free pad.
- If necessary, trim the length from each nail, using nail clippers.



- Refine, smooth and shape the free edge of each nail with the 240-grit side of a **Kanga File™** or **Koala Buffer™**.



- Apply a small amount of **CuticleAway** evenly around the cuticle of each nail.



Gently slide a **cuticle pusher** along the nail plate toward the cuticle area and along the lateral fold to lift and loosen any non-living tissue from the nail plate. Use a **curette** to remove non-living tissue up to the eponychium and lateral edge.



- Use a **manicure nipper** to carefully remove any loosened, non-living tissue, as well as any loose pieces of skin or hang nails. Use a gentle touch during cuticle removal to protect the seals.



- Scrub** nails thoroughly with soap and a damp brush, then rinse with warm water to remove the cuticle remover and soap; towel dry.

- ### 2. R - Remove shine from the nail surface with the 240-grit side of the **Koala Buffer** in the direction of nail growth.



3. E - Eliminate surface contaminants and **P - Purify** nail plate layers

- a. Thoroughly cleanse and temporarily dehydrate the nail plate layers with **ScrubFresh™** using a lint-free, plastic-backed pad. Gently pull lateral folds back and scrub thoroughly to be sure all areas of the nail are completely clean.



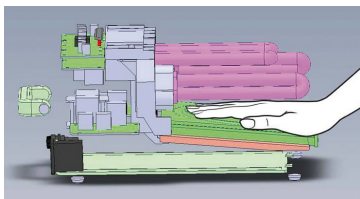
When applying tips, it is **not necessary** to temporarily dehydrate the nail plate at this point of the service.



STEP 2:

Apply Clear Performance Forms™

1. To apply the form, **pre-fold** the vertical perforations to help shape.
2. **Place the form** under the free edge of the nail and angle it to create the desired arch.
3. **Secure** the form along the side and top of the finger and pinch the rear "V" notch together if necessary.
4. **Create a cylinder** with the front of the form and secure the bottom tabs to create a "C" curve.
5. **Trim the tabs** from the bottom of the form after application. This technique prevents the tabs from affecting the hand position in the lamp and ensures correct hand placement during curing.



**To ensure proper cure when using forms, make sure hand is fully inserted into lamp as shown.*

If using the Brisa™ lamp, apply and cure four fingers on each hand and then the thumbs.

STEP 3:

Prime Nails - Apply Brisa Bond to Each Nail

1. **Apply** 1 thin coat of **Brisa Bond** to the natural **nail plate** of 2-3 nails at a time ensuring that the brush has enough liquid to thoroughly and evenly cover each nail. Repeat this step until all nails are thoroughly and evenly coated. Cure for **10 seconds** in the **CND UV Lamp**.*

Remember: When applying **Brisa Bond**, do not touch the skin or allow the product to flood the cuticle area.

STEP 4:

Create a Base Layer (optional)

This step will reinforce the enhancement and can prevent service breakdown. Implement when needed.

1. Apply a thin to medium layer of **Brisa Clear** or **Pure Pink - Sheer Sculpting Gel** in all three Zones.



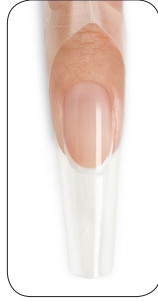
2. Apply to five fingers and **cure** each hand for **two minutes** in the **CND UV Lamp**.* Do not remove the sticky, (uncured) layer after **removing** the **nails** from the lamp.



STEP 5:

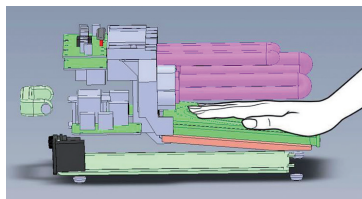
Zone 1 - Smile Lines

1. Use the brush to define the shape of what will become the smile line using **Brisa™ Pure White** or **Soft White Sculpting Gel**. Make a bead and allow a “string” to form while removing the bead from the pot. Touch the tip of the “string” to the start of the desired sidewall smile line placement on the reverse side of the nail, and draw in the smile with a draping motion.



2. **Touch** the brush gently to the forward side of the sidewall to complete the line. This will “draw” in a guide for the smile line and help create consistency from nail to nail.
3. Once the smile line is established **fill in** the desired extension edge with the remaining gel on the brush.

4. Apply to **two fingers at a time**, then **lock into place** for 10 seconds in the **CND UV Lamp**.* Then **apply to the thumb** and cure all five fingers for **two full minutes** in the **CND UV Lamp**.* Do not remove sticky (uncured) layer after removing the nails from the lamp.



**To ensure proper cure when using forms, make sure hand is fully inserted into lamp as shown.*

If using the Brisa lamp, apply and cure four fingers on each hand and then the thumbs.

STEP 6:

Zones 2 and 3 - Sculpting the Stress and Cuticle Area

1. **Build and shape** the enhancement by placing a scoop of gel onto the center of the nail in Zone 2.
2. **Guide** the product from side to side, rotating the brush at a 45-degree angle, and tapering toward the sidewalls - while keeping the bulk of the gel in the center of the nail.
3. Gently **ease** the gel back toward the cuticle area lightening the touch in the middle of the nail.
4. Lightly **feather** the gel up to the established smile line.
5. Apply to **two fingers at a time**, then **lock into place** for 10 seconds in the **CND UV Lamp**.* Then **apply to the thumb** and cure all five fingers for **two full minutes** in the **CND UV Lamp**.* Do not remove sticky (uncured) layer after removing the nails from the lamp.



STEP 7:

Perfect the Shape of all 3 Zones (optional)

This step will reinforce the enhancement and can prevent service breakdown. Implement when needed.

1. **Apply** a thin layer of **Brisa Clear Sculpting Gel** over the entire nail to perfect the shape.

2. **Fill in** low spots by taking a tiny scoop onto your brush. Touch the product to one side of the low spot and lift up to create a thin strand of product. Pull this strand of gel across the nail and touch to the other side. Lift off, and allow the gel to self-level, filling in the low spot.

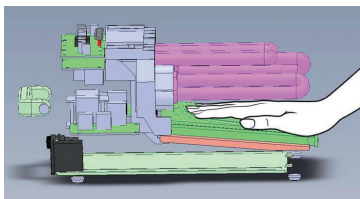
3. Apply to five fingers and **cure** each hand for **two minutes** in the **CND UV Lamp**.*



STEP 8:

Shape and Define

1. Remove **Clear Performance Forms™** from the nail.
2. Remove the sticky, uncured layer with **ScrubFresh™** and a plastic-backed pad.
3. Finish the nail using a **Blizzard™ File** to define and shape.
4. Smooth the surface with a **Boomerang Padded File**, making sure to remove all shine.
5. **Remove** any dust with a disinfected brush. To remove any dust filings left on the freshly filed product, lightly go over nails with a plastic-backed pad and **ScrubFresh**.



**To ensure proper cure when using forms, make sure hand is fully inserted into lamp as shown. If using the Brisa lamp, apply and cure four fingers on each hand and then the thumbs.*

STEP 9:

Bring to High Shine

1. Apply a thin layer of **Brisa Gloss** over the entire nail and encase the free edge.
2. Apply to five fingers and **cure** each hand for **two minutes** in the **CND UV Lamp**.*
3. **Remove** the sticky, uncured layer with **ScrubFresh** and a plastic-backed pad.
4. Massage **SolarOil™** into the nails and skin.



PRODUCTS REQUIRED

CoolBlue™
 CuticleAway
 ScrubFresh
 CND Files and Buffers
 CND Clear Performance Forms
 ProSeries Gel Flat Oval #6 Brush
 Brisa Bond
 Brisa Sculpting Gels
 Brisa Gloss
 SolarOil

ACCESSORIES/EQUIPMENT REQUIRED

CND UV Lamp
 Terry hand towels
 Plastic-backed, lint-free pads
 Polish remover
 Disinfectable Dust brush*
 Cuticle pusher
 Cuticle nippers
 Nail clippers
 Curette

*Optional